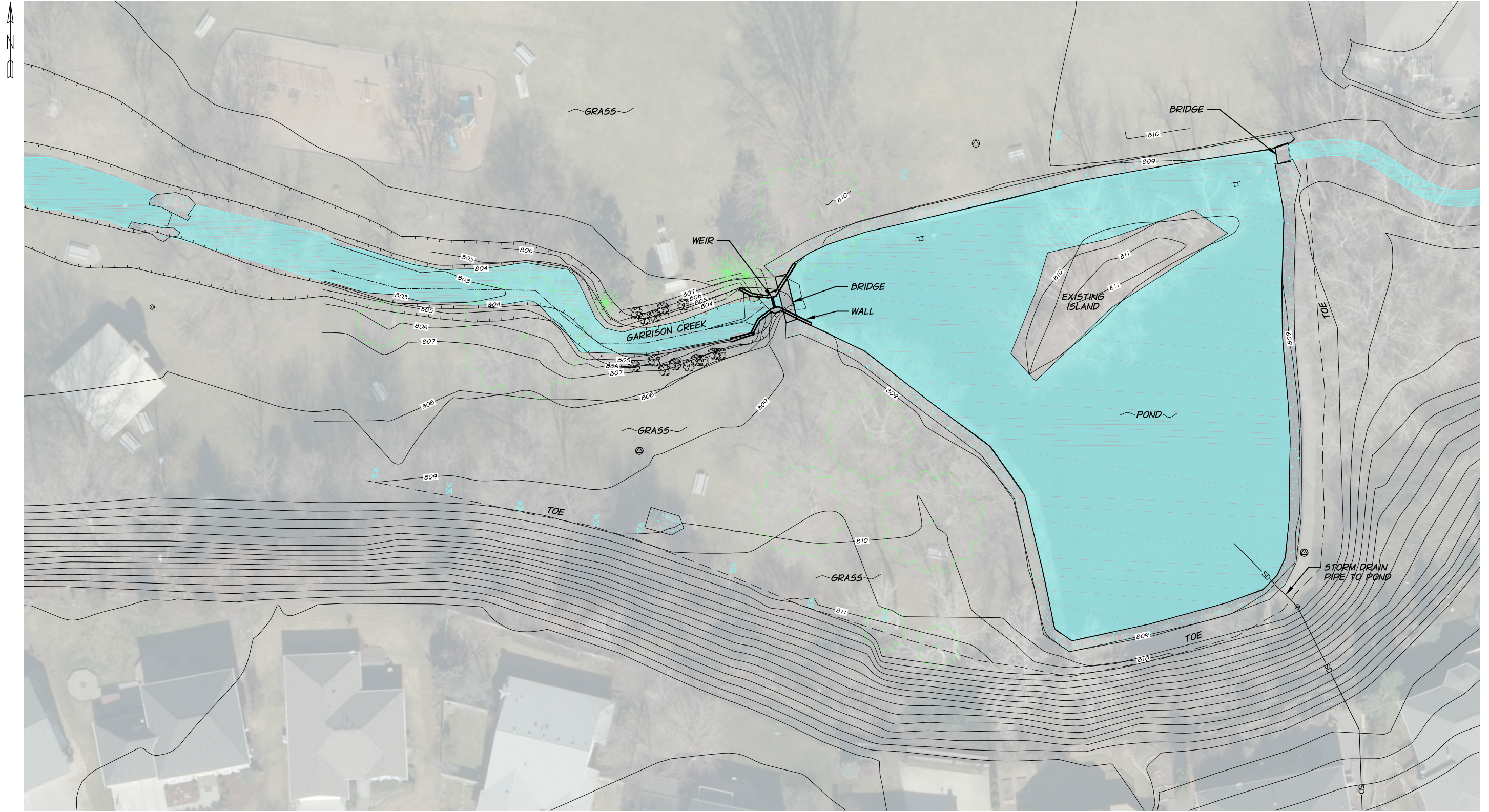




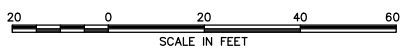


R:\Clients\Tri-State Steelheaders\7008-499 Lions Park Pond\060 Design\7008-499-060C-101Exist.dwg, 8/23/2017 9:57:59 AM, \_DWG To PDF.pc3



REVISION	BY	DATE
DESIGNED BY <i>J. WELLS</i>		
DRAWN BY <i>J. CHAPMAN</i>		
REVIEWED BY		

JOB NUMBER 7008-499	DATE AUGUST 23 2017
ACAD FILE: 7008-499-060C-101Exist.dwg	
COPYRIGHT 2017 BY ANDERSON PERRY & ASSOC., INC.	



30% DESIGN  
**PRELIMINARY**

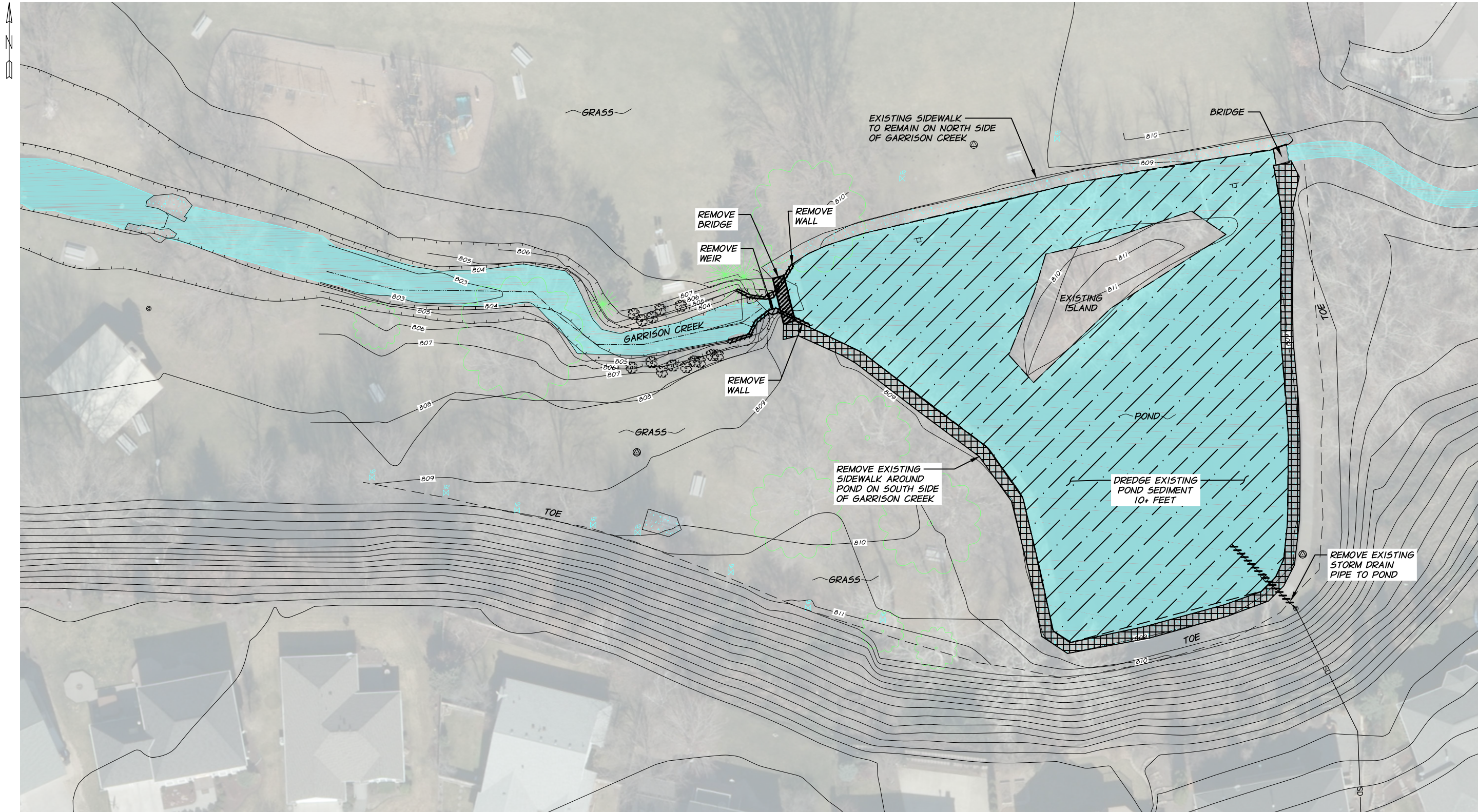


**TRI-STATE STEELHEADERS**  
CITY OF COLLEGE PLACE  
LIONS PARK POND  
2017

EXISTING SITE PLAN, SURVEY, AND LEGEND

SHEET
<b>C-101</b>
2 OF 9

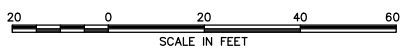




R:\Clients\Tri-State Steelheaders\7008-499 Lions Park Pond\060 Design\7008-499-060C-102Demo.dwg, 8/23/2017 9:58:12 AM, \_DWG To PDF.p3

REVISION	BY	DATE
DESIGNED BY <i>J. WELLS</i>		
DRAWN BY <i>J. CHAPMAN</i>		
REVIEWED BY		

JOB NUMBER 7008-499	DATE AUGUST 23 2017
ACAD FILE: 7008-499-060C-102Demo.dwg	
COPYRIGHT 2017 BY ANDERSON PERRY & ASSOC., INC.	



**30% DESIGN  
PRELIMINARY**



**TRI-STATE STEELHEADERS**  
CITY OF COLLEGE PLACE  
LIONS PARK POND  
2017

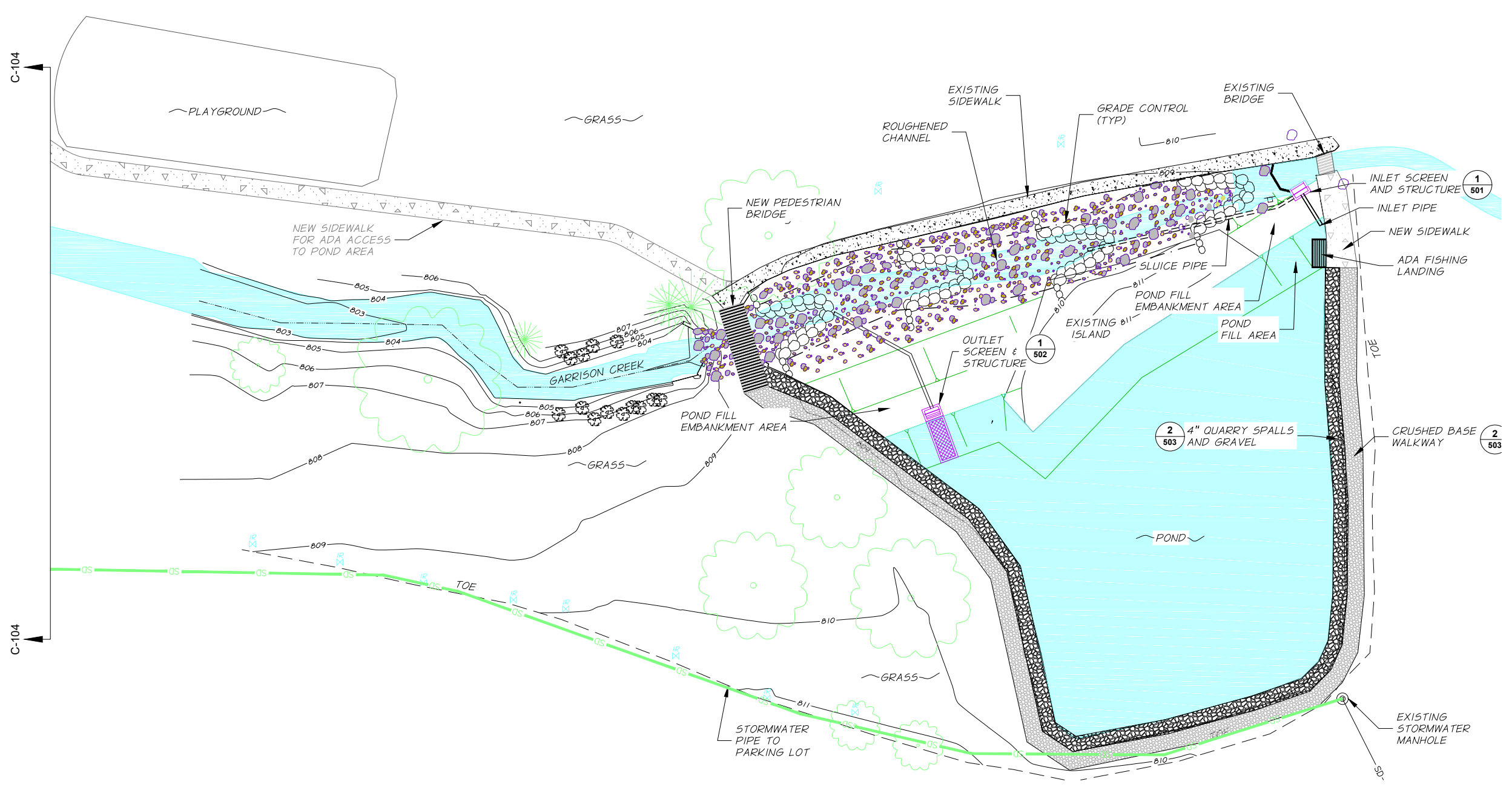
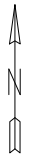
DEMOLITION PLAN

SHEET

**C-102**

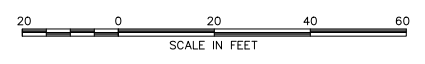
3 OF 9





REVISION	BY	DATE
DESIGNED BY J. WELLS		
DRAWN BY J. CHAPMAN		
REVIEWED BY		

JOB NUMBER 7008-499	DATE AUGUST 23 2017
ACAD FILE: 7008-499-060C-103Site.dwg	
COPYRIGHT 2017 BY ANDERSON PERRY & ASSOC., INC.	



30% DESIGN  
**PRELIMINARY**



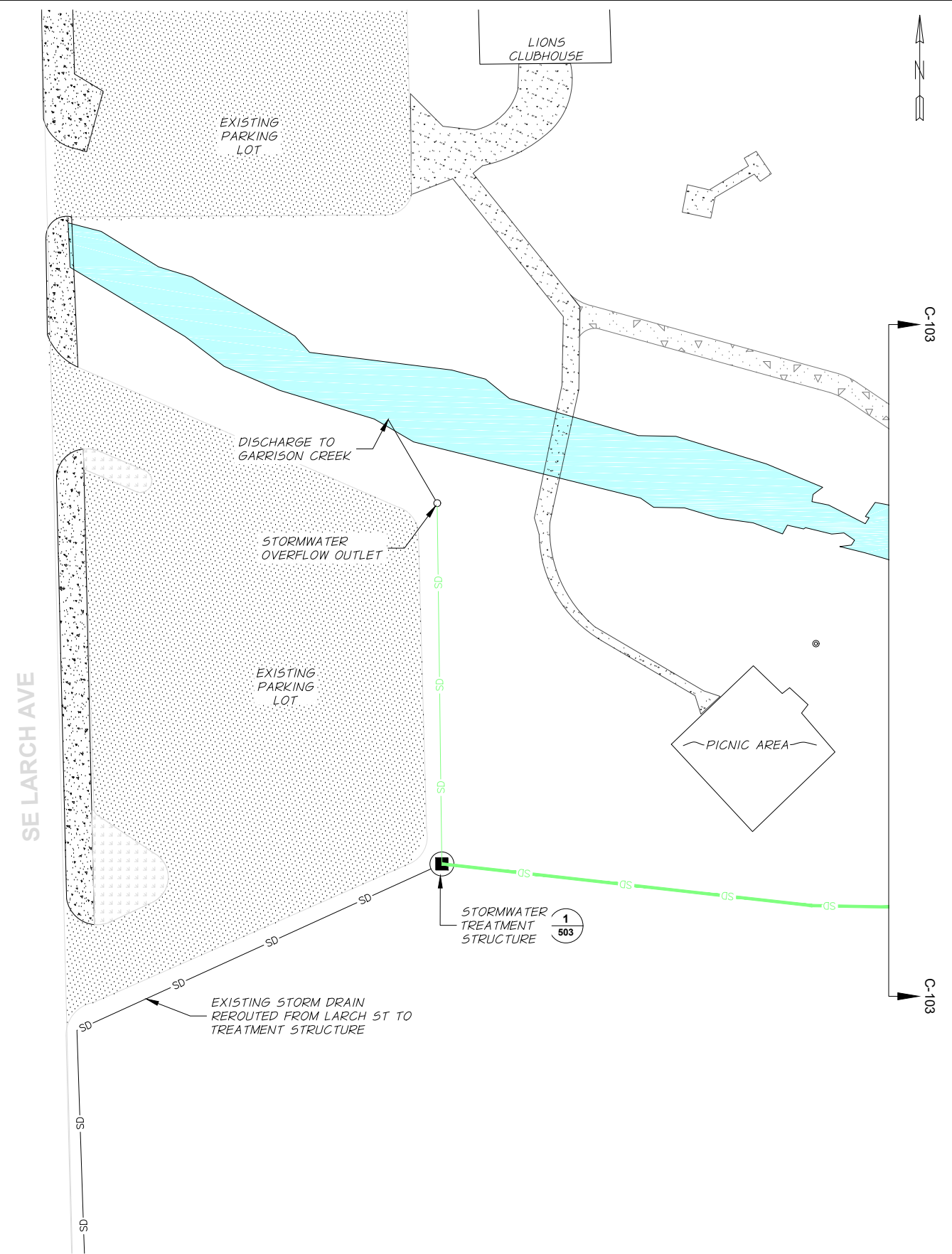
**TRI-STATE STEELHEADERS**  
CITY OF COLLEGE PLACE  
LIONS PARK POND  
2017

PROPOSED SITE PLAN

SHEET  
**C-103**  
4 OF 9

R:\Clients\Tri-State Steelheaders\7008-499 Lions Park Pond\060 Design\7008-499-060C-103Site.dwg, 8/23/2017 9:58:24 AM, DWG To PDF.pc3

R:\Clients\Tri-State Steelheaders\7008-499 Lions Park Pond\060 Design\7008-499-060C-104Site.dwg, 8/23/2017 9:58:35 AM, DWG To PDF.pc3



REVISION	BY	DATE
DESIGNED BY <i>J. WELLS</i>		
DRAWN BY <i>J. CHAPMAN</i>		
REVIEWED BY		

JOB NUMBER 7008-499	DATE AUGUST 23 2017
ACAD FILE: 7008-499-060C-104Site.dwg	
COPYRIGHT 2017 BY ANDERSON PERRY & ASSOC., INC.	



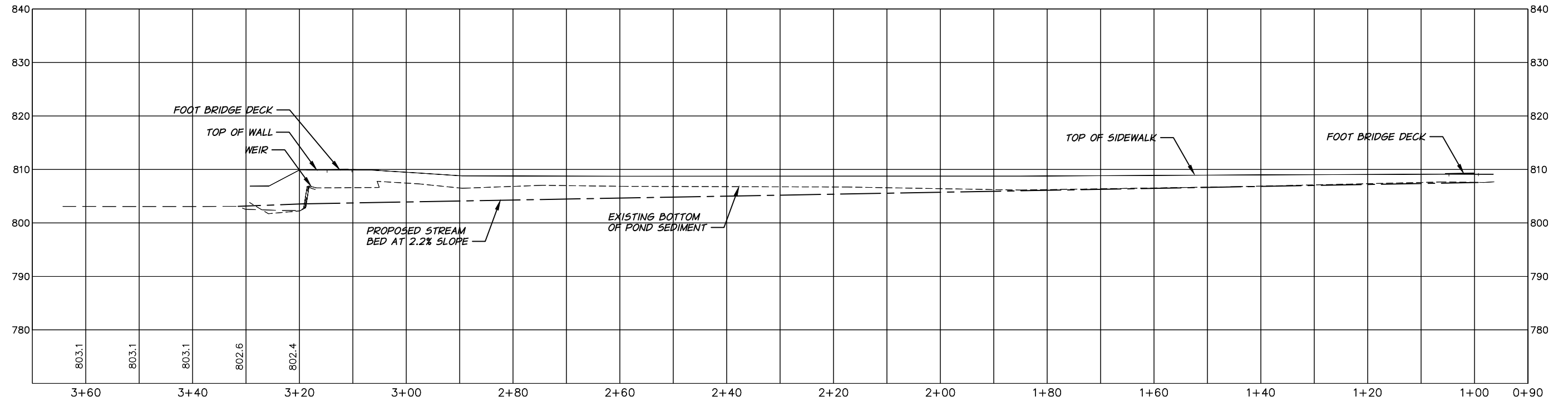
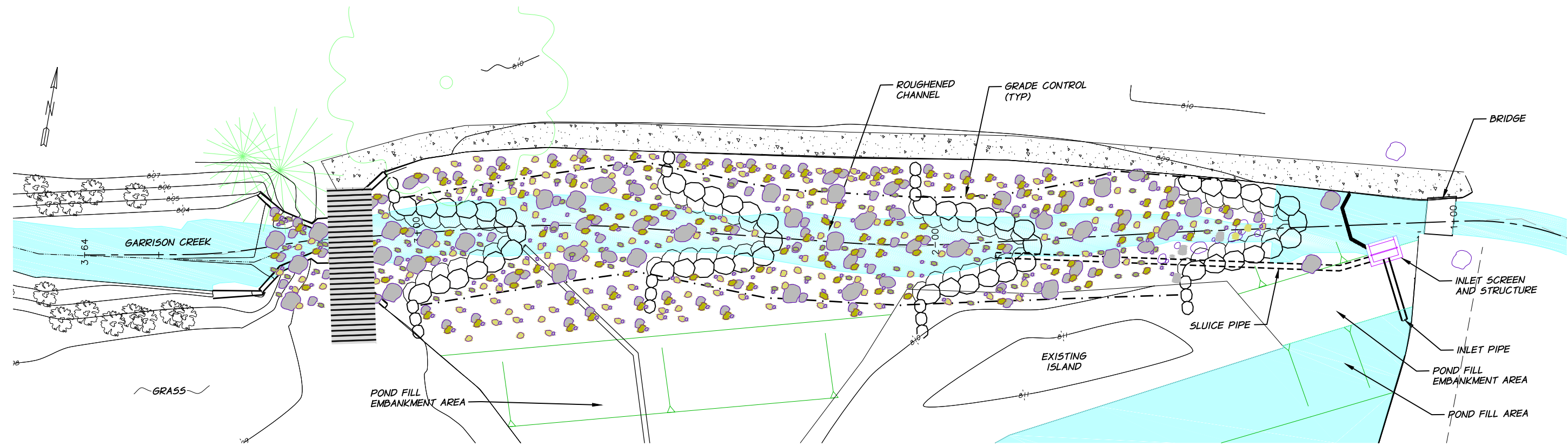
30% DESIGN  
**PRELIMINARY**



**TRI-STATE STEELHEADERS**  
CITY OF COLLEGE PLACE  
LIONS PARK POND  
2017

PROPOSED SITE PLAN

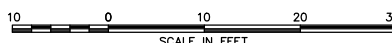
SHEET  
**C-104**  
5 OF 9



R:\Clients\Tri-State Steelheaders\7008-499 Lions Park Pond\060 Design\7008-499-060C-201Profile.dwg, 8/23/2017 9:58:44 AM, DWG To PDF.pc3

REVISION	BY	DATE
DESIGNED BY J. WELLS		
DRAWN BY J. CHAPMAN		
REVIEWED BY		

JOB NUMBER 7008-499	DATE AUGUST 23 2017
ACAD FILE: 7008-499-060C-201Profile.dwg	
COPYRIGHT 2017 BY ANDERSON PERRY & ASSOC., INC.	



30% DESIGN  
**PRELIMINARY**



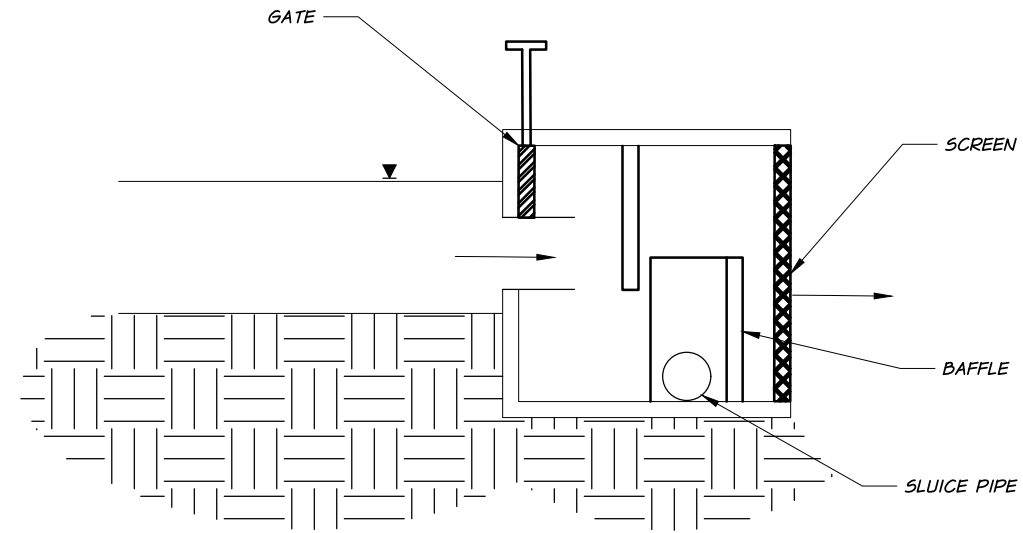
**TRI-STATE STEELHEADERS**  
CITY OF COLLEGE PLACE  
LIONS PARK POND  
2017

CHANNEL CROSS SECTIONS AND PROFILE

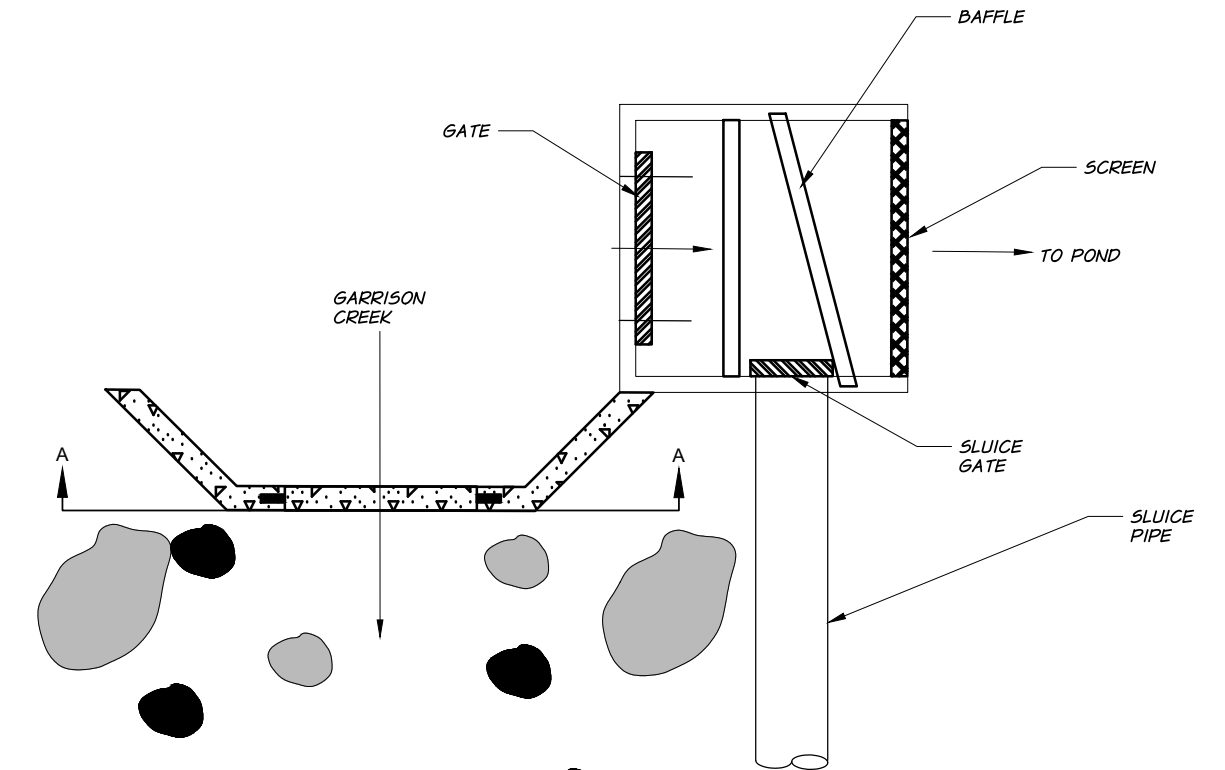
SHEET

**C-201**

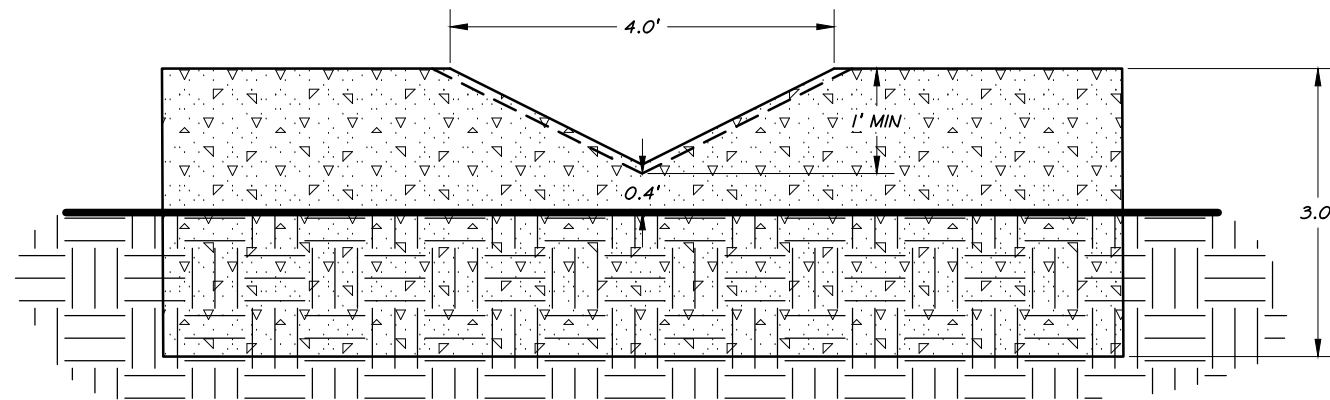
6 OF 9



1  
501 **PROFILE - INLET STRUCTURE**  
NTS



1  
501 **PLAN - INLET STRUCTURE**  
NTS



**A - A**  
NTS

REVISION	BY	DATE	JOB NUMBER	7008-499	DATE	AUGUST 23 2017
DESIGNED BY	J. WELLS		ACAD FILE	7008-499-060C-501.dwg		
DRAWN BY	J. CHAPMAN		COPYRIGHT 2017 BY ANDERSON PERRY & ASSOC., INC.			
REVIEWED BY						

30% DESIGN  
**PRELIMINARY**



**TRI-STATE STEELHEADERS**  
CITY OF COLLEGE PLACE  
LIONS PARK POND  
2017

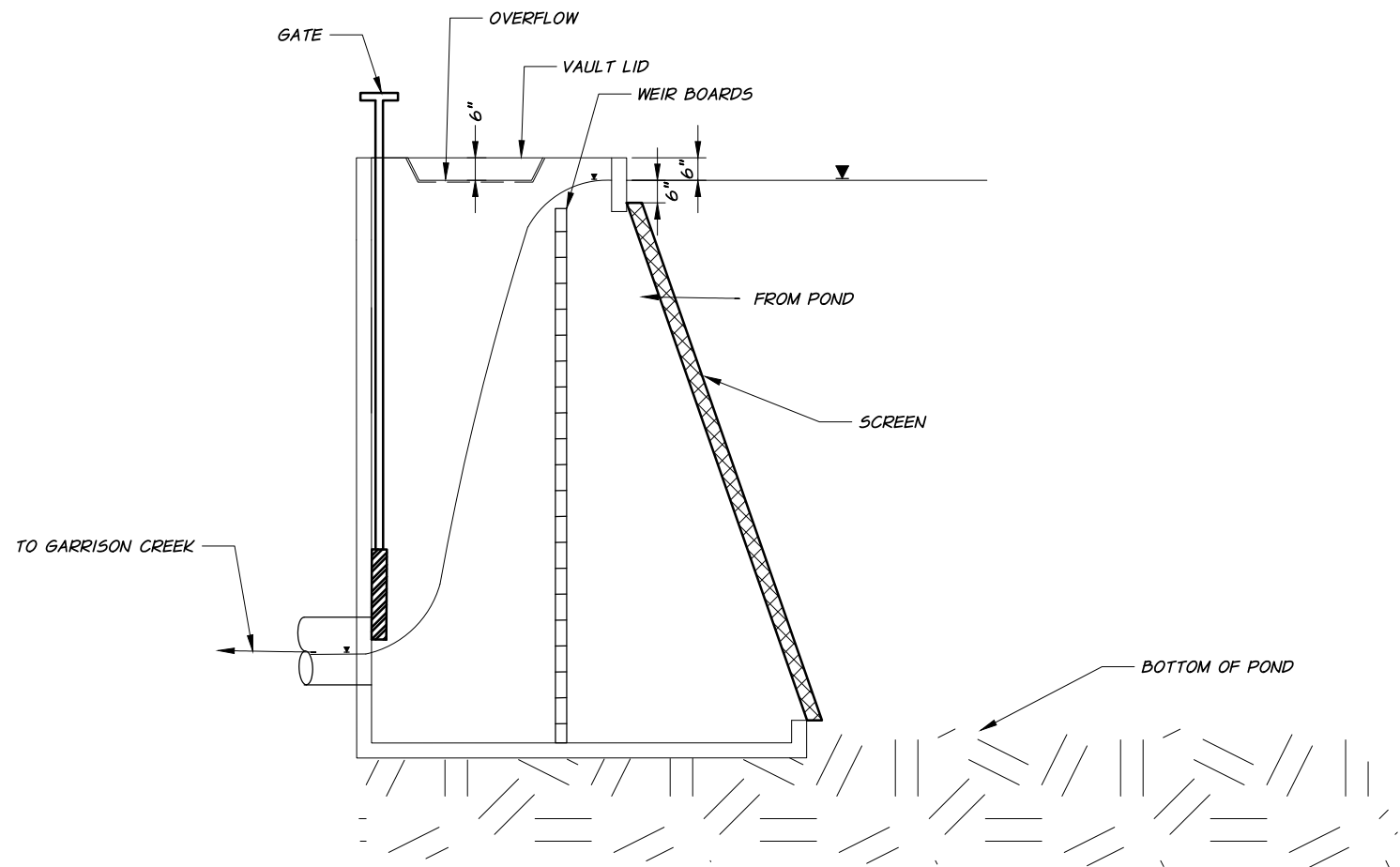
POND INLET DETAILS

SHEET

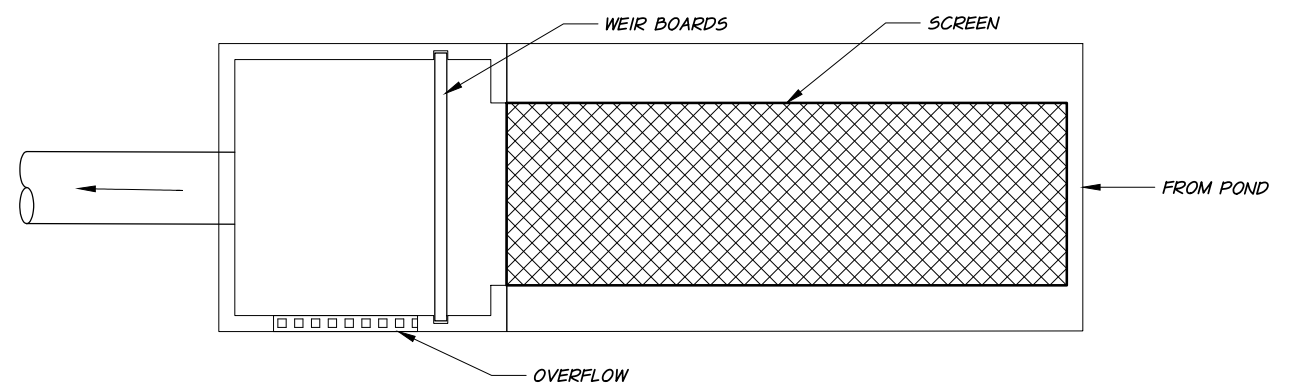
**C-501**

7 OF 9

R:\Clients\Tri-State Steelheaders\7008-499 Lions Park Pond\060 Design\7008-499-060C-502.dwg, 8/23/2017 9:58:54 AM, \_DWG To PDF.pc3



**1**  
502 **PROFILE - OUTLET STRUCTURE**  
NTS



**1**  
502 **PLAN - OUTLET STRUCTURE**  
NTS

DESIGNED BY	J. WELLS	DATE	AUGUST 23 2017
DRAWN BY	J. CHAPMAN	ACAD FILE:	7008-499-060C-502.dwg
REVIEWED BY		COPYRIGHT 2017 BY ANDERSON PERRY & ASSOC., INC.	

30% DESIGN  
**PRELIMINARY**

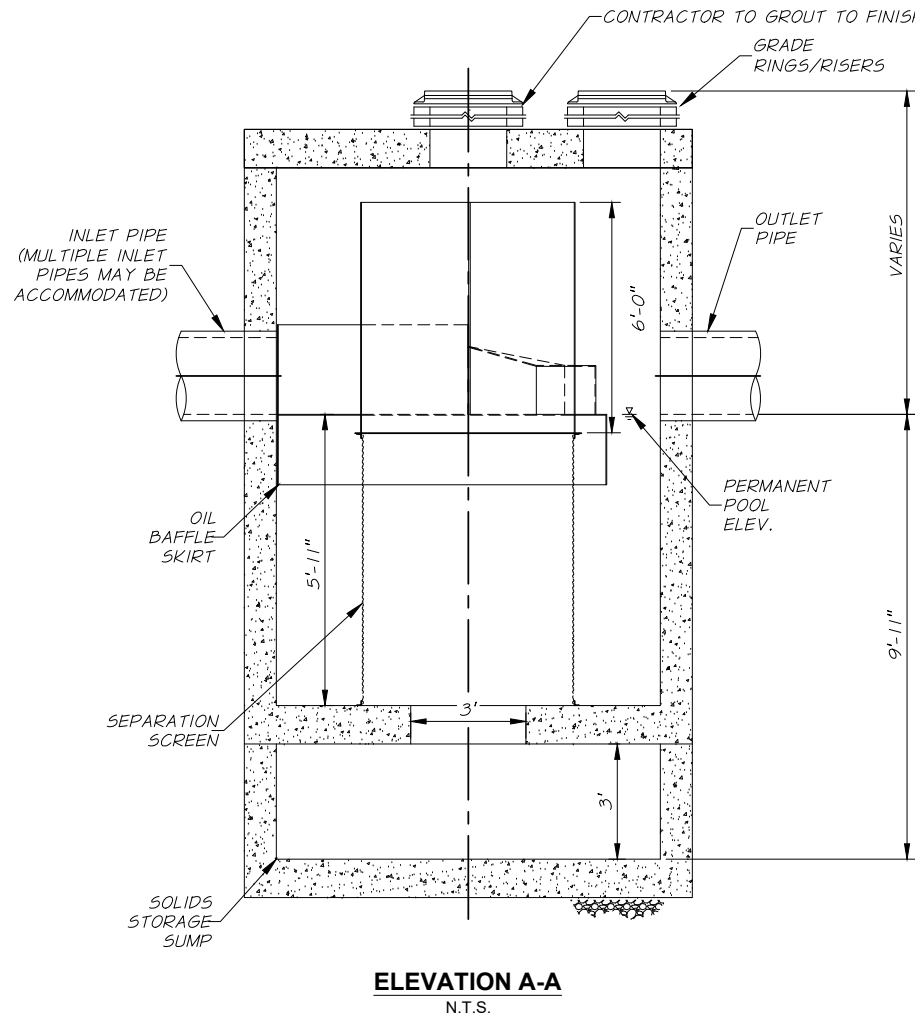


**TRI-STATE STEELHEADERS**  
CITY OF COLLEGE PLACE  
LIONS PARK POND  
2017

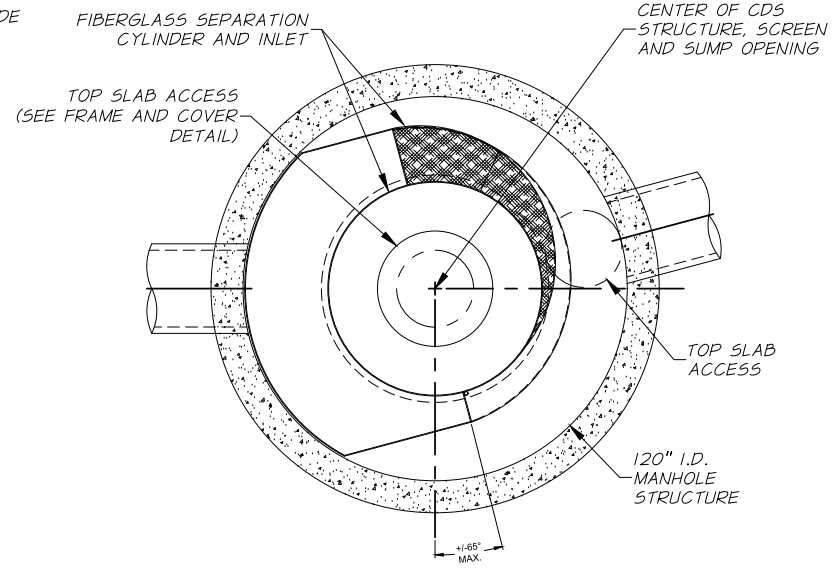
POND OUTLET DETAILS

SHEET  
**C-502**  
8 OF 9

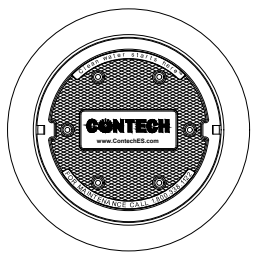




**ELEVATION A-A**  
N.T.S.



**PLAN VIEW B-B**  
N.T.S.



**FRAME AND COVER**  
(DIAMETER VARIES)  
N.T.S.

1  
503

**STORMWATER TREATMENT STRUCTURE**

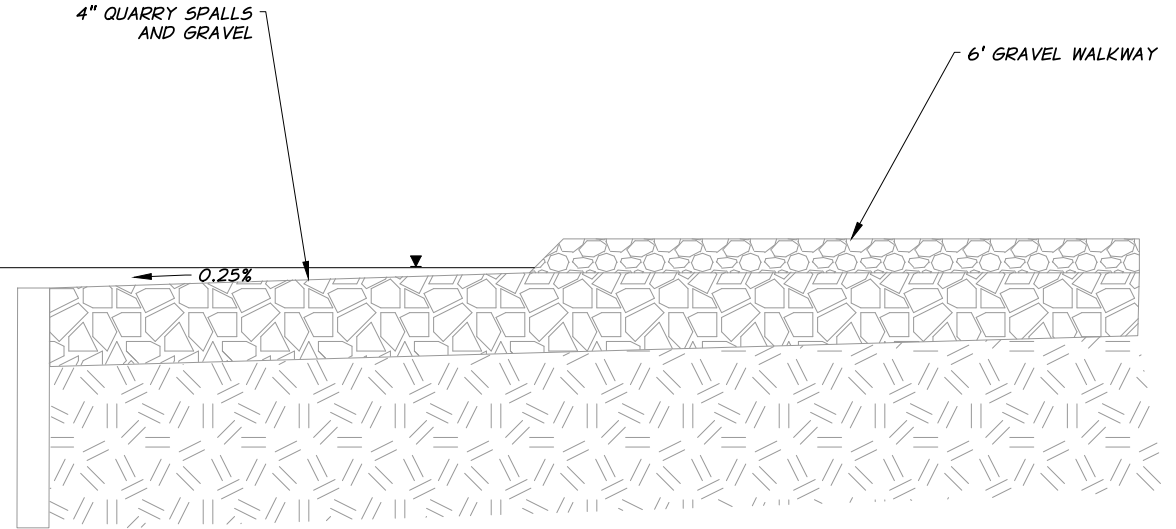
N.T.S.

**GENERAL NOTES**

1. CONTECH TO PROVIDE ALL MATERIALS UNLESS NOTED OTHERWISE.
2. DIMENSIONS MARKED WITH ( ) ARE REFERENCE DIMENSIONS, ACTUAL DIMENSIONS MAY VARY.
3. FOR FABRICATION DRAWINGS WITH DETAILED STRUCTURE DIMENSIONS AND WEIGHTS, PLEASE CONTACT YOUR CONTECH ENGINEERED SOLUTIONS LLC REPRESENTATIVE. [www.ContechES.com](http://www.ContechES.com)
4. CDS WATER QUALITY STRUCTURE SHALL BE IN ACCORDANCE WITH ALL DESIGN DATA AND INFORMATION CONTAINED IN THIS DRAWING.
5. STRUCTURE SHALL MEET AASHTO H520 AND CASTINGS SHALL MEET H520 (AASHTO M 306) LOAD RATING, ASSUMING GROUNDWATER ELEVATION AT, OR BELOW, THE OUTLET PIPE INVERT ELEVATION. ENGINEER OF RECORD TO CONFIRM ACTUAL GROUNDWATER ELEVATION.
6. PVC HYDRAULIC SHEAR PLATE IS PLACED ON SHELF AT BOTTOM OF SCREEN CYLINDER. REMOVE AND REPLACE AS NECESSARY DURING MAINTENANCE CLEANING.

**INSTALLATION NOTES**

- A. ANY SUB-BASE, BACKFILL DEPTH, AND/OR ANTI-FLOTATION PROVISIONS ARE SITE-SPECIFIC DESIGN CONSIDERATIONS AND SHALL BE SPECIFIED BY ENGINEER OF RECORD.
- B. CONTRACTOR TO PROVIDE EQUIPMENT WITH SUFFICIENT LIFTING AND REACH CAPACITY TO LIFT AND SET THE CDS MANHOLE STRUCTURE (LIFTING CLUTCHES PROVIDED).
- C. CONTRACTOR TO ADD JOINT SEALANT BETWEEN ALL STRUCTURE SECTIONS, AND ASSEMBLE STRUCTURE.
- D. CONTRACTOR TO PROVIDE, INSTALL, AND GROUT PIPES. MATCH PIPE INVERTS WITH ELEVATIONS SHOWN.
- E. CONTRACTOR TO TAKE APPROPRIATE MEASURES TO ASSURE UNIT IS WATER TIGHT, HOLDING WATER TO FLOWLINE INVERT MINIMUM. IT IS SUGGESTED THAT ALL JOINTS BELOW PIPE INVERTS ARE GROUTED.



2  
503

**GRAVEL WALKWAY AND SHORELINE**

N.T.S.

DESIGNED BY	J. WELLS	DATE	AUGUST 23 2017
DRAWN BY	J. CHAPMAN	ACAD FILE	7008-499-060C-503.dwg
REVIEWED BY		COPYRIGHT	2017 BY ANDERSON PERRY & ASSOC., INC.

30% DESIGN  
**PRELIMINARY**



**TRI-STATE STEELHEADERS**  
CITY OF COLLEGE PLACE  
LIONS PARK POND  
2017

STORMWATER IMPROVEMENTS AND  
WALKWAY DETAILS

SHEET

**C-503**

9 OF 9

R:\Clients\Tri-State Steelheaders\7008-499-Lions Park Pond\060 Design\7008-499-060C-503.dwg, 8/23/2017 9:58:59 AM, \_DWG To PDF.pcl